

# 2" x 8.5" Vertical Jumbo MagMark Layout Specifications

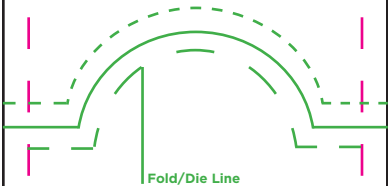
Applies to: MM2085-CUS

## ALWAYS:

- Use CMYK color values and color mode
- Convert fonts to outline
- Package fonts and links (for IDML)
- Make sure images are 300+ DPI

## ACCEPTABLE FILE FORMATS:

PDF, EPS, AI, TIFF, PSD,  
JPG, PNG, IDML



### Fold/Die Line

Due to production constraints two different colors cannot meet against the fold or at the edge of the diecut. Continuous color or image must cross over these areas by at least .125 in.

### Bleed Area - 2.25 x 8.75 in.

Elements touching cut line must extend to bleed.

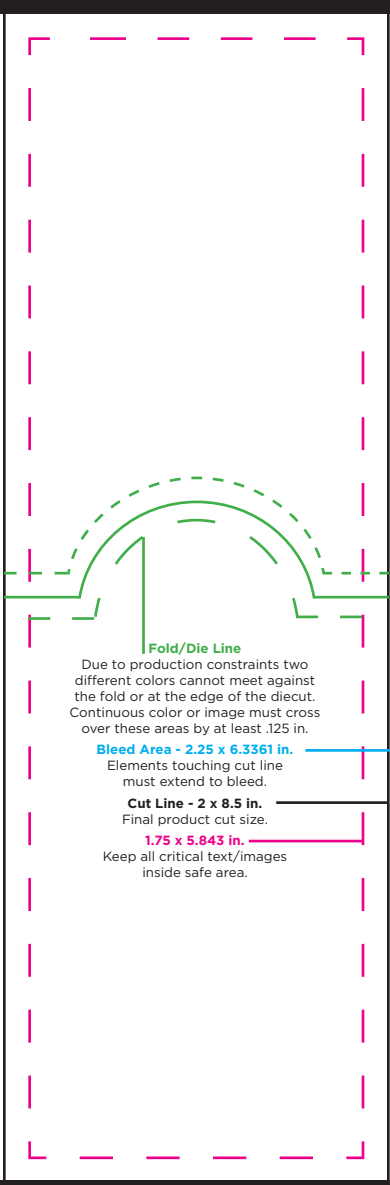
### Cut Line - 2 x 8.5 in.

Final product cut size.

### 1.75 x 8.25 in.

Keep all critical text/images inside safe area.

# MAGNET AREA



## Fold/Die Line

Due to production constraints two different colors cannot meet against the fold or at the edge of the diecut. Continuous color or image must cross over these areas by at least .125 in.

## Bleed Area - 2.25 x 6.3361 in.

Elements touching cut line must extend to bleed.

## Cut Line - 2 x 8.5 in.

Final product cut size.

## 1.75 x 5.843 in.

Keep all critical text/images inside safe area.

# MAGNET AREA